

Senior Research Communications Manager

Job description

It will take a society to beat dementia. Alzheimer's Society.



Who we are

Dementia is the UK's biggest killer. One in three people born in the UK today will develop dementia in their lifetime.

At Alzheimer's Society, we're the UK's leading dementia charity and the only one to tackle all aspects of dementia by giving help and hope to people living with dementia today and in the future. We give vital support to people facing the most frightening times of their lives, while also funding groundbreaking research and campaigning to make dementia the priority it should be.

Together with our supporters, we're working towards a world where dementia no longer devastates lives.

Our values

Our values tell everyone who we are as an organisation.

Our values make sure that our focus is clear for the challenges and opportunities ahead and remind us of what we all stand for.

Our values are evident in everything we do, how we do it and how we work together.

These are not just words on a wall, we live these every day in all our work. We are determined to make a difference when and where it matters most, by being passionate, focussed and making a lasting impact for people affected by dementia.



Determined to make a difference

We're passionate, we're focused and we make a lasting impact for everyone living with dementia.



Trusted expert

We're listening, we're learning and we use experience and evidence.



Better together

We're open, we combine our strengths and we achieve more together.



Compassionate

We're kind, we're honest and we don't shy away from challenges.

Through our values we will make the greatest difference for people affected by dementia. Whether you are someone living with dementia, a family member or carer, a supporter, a donor, a colleague from another organisation, an employee or a volunteer, these four values will shape your experience with Alzheimer's Society.

Senior Research Communications Manager

Position in the organisation

Reports to the Head of Research.

Line manages the Research Communications Manager, Research Information Manager and Senior Research Communications Officer.

Responsible for the Research Communications team within the Research and Innovation department.

Part of our Research and Influencing Directorate.

Purpose of this role

At Alzheimer's Society we are advisors, supporters, fundraisers, researchers, influencers, communicators, technical specialist and so much more. We are volunteers, we are employees, and together we are here to make a difference to the lives of people with dementia and their carers.

We are committed to ending the devastation caused by dementia. Achieving this future relies on bold, ambitious research - which is why today we are funding over £50 million in world-leading dementia research and supporting a network of more than 400 researchers across the UK. Our pioneering research programme drives innovation, empowers leading scientists, and ensures that people affected by dementia shape the questions we ask and the breakthroughs we pursue. Together, we are tackling the biggest challenges in dementia so that everyone can access the diagnosis, treatments, care and support they deserve.

The Research team plays a central role in delivering this ambition. We ensure that every project we fund is of the highest quality and aligned with the Society's strategy. Passionate, evidence-driven and solutions-focused, we work collaboratively across the organisation to strengthen the UK dementia research ecosystem, accelerate scientific understanding and create equitable pathways from discovery to impact - ensuring research leads to real-world benefit for all those affected by dementia.

As in-house experts, we champion research at every stage. We make complex science accessible, engaging and meaningful, ensuring breakthroughs are widely understood and effectively communicated. By translating evidence into inspiring stories, we position Alzheimer's Society as a trusted leader in dementia research and motivate more people to join us in driving change.

We are looking for someone who is passionate about shaping and stewarding a compelling research narrative that clearly connects scientific discovery to real-world benefit for people affected by dementia. In this new role, you will lead our organisational approach to research communications, translating complex scientific and medical information into clear, accessible content and engaging narratives that showcase the impact of our work and inspire more people to support our cause. As our Senior Research Communications Manager, you will work strategically across the charity to embed research narratives across major organisational priorities, campaigns and moments.

This is a highly visible and strategic role that requires specialist understanding of research communications and a strong ability to motivate and influence a variety of stakeholders. You will provide leadership and in-house expertise to ensure that research communications activity is insight-led and effectively integrated with wider communications channels and audiences. You will oversee the translation of complex research portfolios into clear, audience-led messaging that ensures research resonates across internal and external audiences.

You will act as a senior internal and external influencer, using your deep understanding of Alzheimer's Society's research portfolio and the wider research landscape to ensure research

content is used effectively to support organisational objectives. You will work with a high degree of autonomy, building strong relationships with senior stakeholders including across media, digital, fundraising, internal communications, brand and campaigns.

Your ability to build strong external partnerships will enable you to work closely with the research community, funders and partners, strengthening the Society's credibility as a trusted and authoritative research leader, and supporting both fundraising and media engagement.

Working alongside the Head of Research and the Senior Research Manager, you will be a member of the Research senior management team, contributing to the development and delivery of our research strategy. You will deputise for the Head of Research, including in decision-making when required, representing the organisation in internal and external forums.

You will represent Alzheimer's Society at conferences, events and in the media, raising the profile of our research. You will also act as a credible and compelling spokesperson with major donors, trusts and corporates, demonstrating the impact of our research and helping to inspire income and long-term investment.

You will lead and develop the research communications team, creating an environment where people feel supported, empowered and able to contribute their best work. You will encourage continuous learning, collaboration and innovation, taking responsibility for your own development and supporting the development of others.

We are looking for someone who exemplifies our values, someone who is: Determined to make a difference when and where it matters most. A trusted expert who believes in working Better together and demonstrates true Compassion.

Key accountabilities and responsibilities

- Lead and evolve the organisation-wide strategy for research communications, ensuring research is positioned as a core organisational asset that advances the charity's strategy and mission.
- Ensure that research communications support our research strategy by engaging and inspiring a wider range of researchers across disciplines and career pathways.
- Act as a senior expert on research communications internally, providing strategic leadership, challenge and advice across the organisation, including at a senior level.
- Work collaboratively and autonomously across the charity to ensure research communications are embedded strategically into major organisational campaigns, moments and corporate storytelling, including across fundraising, brand, media, policy and influencing.
- Set the direction and tone for how complex research is communicated to our external audiences, ensuring clarity, accuracy and relevance.
- Lead on developing creative, robust processes and ways of working across internal teams, to support the creation of compelling, inspiring and engaging research content that showcases the impact of our funded research.
- Hold a strong awareness of the dementia research landscape alongside excellent understanding of our audiences' needs for research content, to develop and iterate our approach to research communications
- Work with other specialist teams across the organisation, and with external suppliers where required, to support the design and delivery of content and communication products that support our research communications strategy.

- Position Alzheimer's Society as a credible voice within the dementia research ecosystem through proactive thought leadership and knowledge of emerging research trends.
- Develop and maintain trusted senior-level external relationships with leading researchers, funders and partners, to enable accurate, high quality external communications.
- Use insight and performance data and feedback to evaluate the impact of research communications activity, to continuously refine messaging, formats and channels
- Ensure research communications reflect responsible science communication principles around scientific accuracy, ethical integrity and regulatory and reputational safety
- Lead, inspire and develop a high performing research communications team, building depth of expertise and strategic confidence and embedding a culture of test, learn and continuous improvement.
- As senior member of the Research team, deputise for the Head of Research and other Heads of function, where appropriate, in leadership forums and internal and external meetings.
- Act as a senior decision-maker on high-risk or sensitive research communications issues, where appropriate.
- Act as a media spokesperson for the organisation and as a senior point of sign-off for media content.
- Provide strategic input into the development of annual directorate business planning and reporting.
- Manage the day-to-day operating budget for the Research Communications team
- Undertake any other reasonable duties which may arise from time to time and which are commensurate with the general level of the post.
- Ability and willingness to travel independently on behalf of the Society, including occasional overnight stays as required.

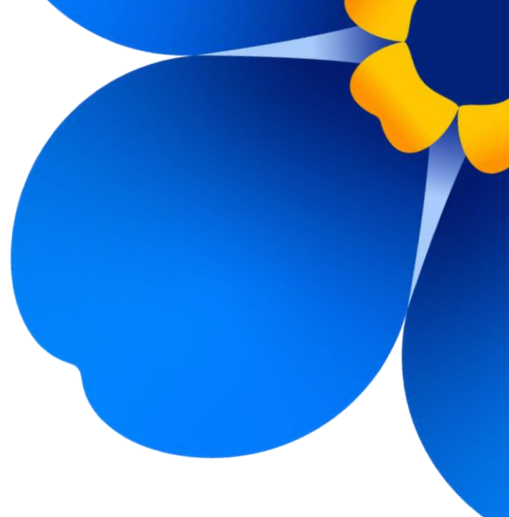
We are looking for someone who can...

- Adhere to all the Society's service standards, policies and procedures.
- Comply with the data protection regulations, ensuring that information on clients remains confidential.
- Be responsible for personal learning and development, to support the learning and development of others and the whole organisation.
- Work in a manner that facilitates inclusion, particularly of people with dementia.
- Implement the Society's health and safety policy and procedures, ensuring that all practices and procedures are undertaken in accordance with a healthy and safe working environment and that all staff and volunteers for whom you may be responsible are aware of their responsibilities in respect of their role, monitoring data and recommending action as required.
- Administrate and organise own work to ensure that it is accurate and meets quality targets, reasonable deadlines, and reporting requirements.

Person specification and selection criteria

| Skills & knowledge | Application (A) or Interview (I) |
|---|----------------------------------|
| Relevant experience or education qualification in a relevant biomedical or health discipline. | A/I |
| Experience, evidence of continued professional development or a further qualification in communication or journalism. | A/I |
| Extensive experience in research communications in a research, academic or charity environment. | A/I |
| Proven experience in a role that demonstrates understanding of cross directorate working and with co-ordinated interdependencies. | A/I |
| Extensive experience of translating complex scientific or research information for non-specialist audiences. | A/I |
| Proven ability to lead the development and delivery of insight-led communications strategies and plans that support organisational priorities. | A/I |
| Experience of evaluating communications activity and using insight to improve reach, quality and impact. | A/I |
| Knowledge of dementia and the related science. | A/I |
| Able to communicate, in writing and verbally, compellingly, persuasively and credibly with a range of audiences. | A/I |
| Experience leading, mentoring and developing high-performing teams. | A/I |
| Confidence to work across multiple teams and to influence change in working practices. | A/I |
| Able to influence and advise senior stakeholders, driving alignment and change. | A/I |
| Able to manage several projects proactively and simultaneously, set priorities, problem solve, work independently, and meet agreed standards and deadlines. | A/I |

| Competencies & personal attributes | Application (A) or interview (I) |
|--|----------------------------------|
| Be a team player, supporting colleagues when there are deadlines, and who knows when to ask for help themselves. | A/I |
| Be a self-starter with a determination to make a difference. | A/I |
| Effective organisational and timekeeping skills. | A/I |
| Good attention to detail. | A/I |
| Non-judgemental communication. | A/I |
| Commitment to and understanding of equal opportunities. | A/I |
| Understanding of the inclusion agenda and its relevance within a diverse society. | A/I |
| Curious and constantly questioning the status quo. | A/I |
| Eager and able to work at pace in a complex environment. | A/I |
| Independently minded and a critical thinker. | A/I |
| Flexible, creative and committed to continuous improvement. | A/I |
| Able to adapt to situations, people and challenges. | A/I |
| Pragmatic individual who is ambitious for themselves and others. | A/I |



Our benefits



Financial Security

- Group Personal Pension Plan with Scottish Widows – with up to 8% employer contributions rate
- Life Assurance Scheme – two times your annual salary
- Society Plus and Smart Spending App – giving you unbeatable savings at hundreds of retailers



Health & Wellbeing

- Health Cash Plan
- 24/7 Employee Assistance Programme including online and face to face cooselling
- Discounted gym membership with Society Plus
- Lived Experience Networks
- Mental health app and unlimited therapy



Personal Development

- Apprenticeships
- Leadership development programme
- Financial support towards relevant professional qualifications



Family & Dependants

- Enhanced family leave - 16 weeks paid for all parents
- Paid time off work for fertility treatments for both partners
- Paid carers leave
- Paid dependants leave
- Paid compassionate and bereavement leave
- Paid time off work to support those transitioning



Recognition

- Annual people awards
- Long service awards
- Thank you eCards
- Values Hero and Society Legend Awards



Work Life Balance

- Annual leave of 27 days increasing to 30, plus bank holidays
- Career breaks of up to 3 months
- Flexible working
- Wellbeing leave